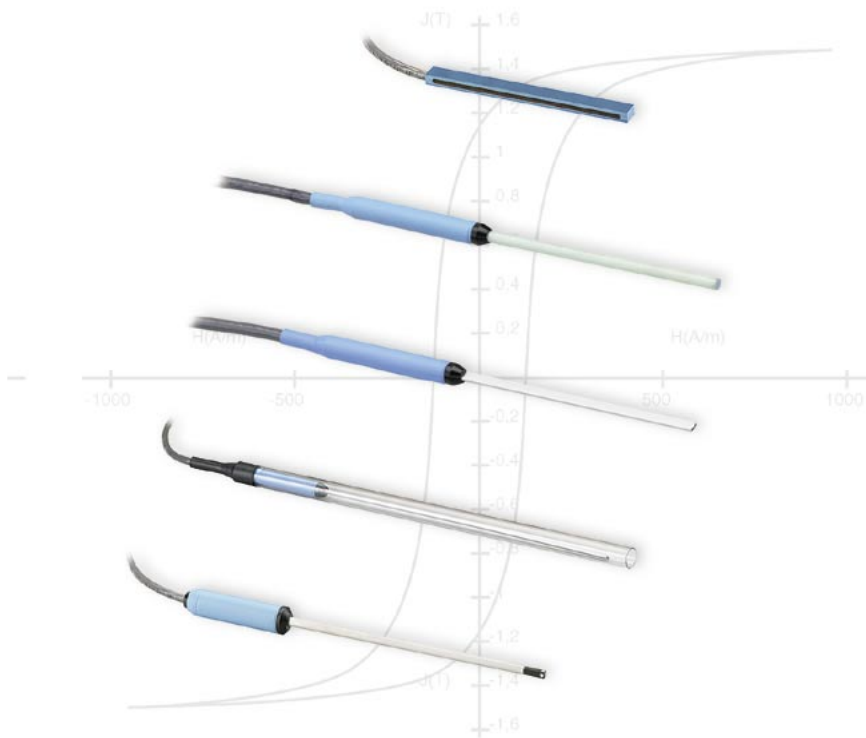


Hall Probes Standard Programme

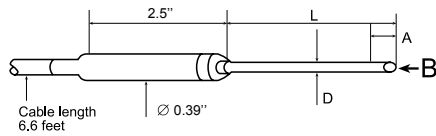


- More than 500 different probes for every application
- For magnetic fields up to 30 Tesla
- For air gaps > 0.5 mm
- Customer-specific solutions for special applications
- All probes with test certificate

Features

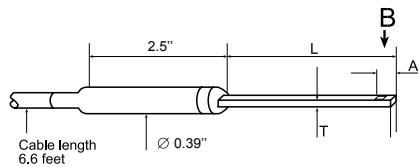
- Hall probes for use with Gaussmeters
- Comprehensive probe programme for all measuring requirements
- EEPROM probe connector
- Automatic selection and entry of probe data into the measuring instrument

Axial probes



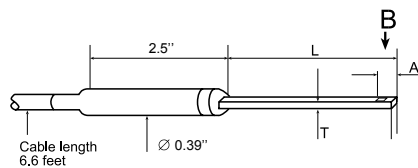
Model	L	D	A	Stem Material	Corrected accuracy (%) of reading	Temperature coefficient (maximum) zero	Temperature coefficient (maximum) calibration
MMA-2502-VH	2" ± 0.063"	0.25" ± 0.006"	0.015"	Aluminum	± 0.25 % to 30 kG	± 0.09 G/°C	- 0.04 %/°C
MNA-1904-VH	4" ± 0.125"	0.187" ± 0.005"	0.005"	Fiberglass epoxy			
MMA-2502-VG	2" ± 0.063"	0.25" ± 0.006"	0.015"	Aluminum	± 0.15 % to 30 kG	± 0.13 G/°C	- 0.005 %/°C
MNA-1904-VG	4" ± 0.125"	0.187" ± 0.005"	0.005"	Fiberglass epoxy			

Transverse probes



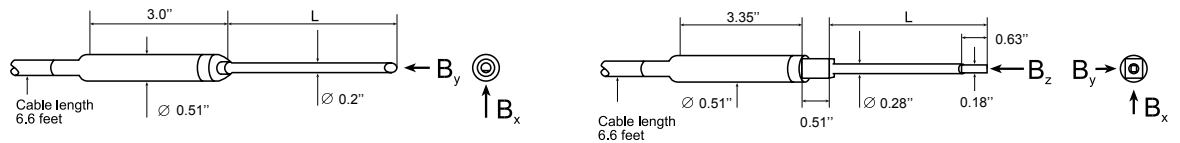
Model	L	D	A	Stem Material	Frequency Range	Corrected accuracy (%) of reading	Temperature coefficient (maximum) zero	Temperature coefficient (maximum) calibration
MMT-6J04-VH	4" ± 0.125"	0.061" max	0.180"	Aluminum	DC	± 0.25 % to 30 kG	± 0.09 G/°C	- 0.04 %/°C
MNT-4E04-VH		0.045" max	0.150"	Rigid glass epoxy	DC and 10 Hz to 400 Hz			
MMT-6J04-VG		0.061" max	0.180"	Aluminum	DC	± 0.15 % to 30 kG	± 0.13 G/°C	- 0.005 %/°C
MNT-4E04-VG		0.045" max	0.150"	Rigid glass epoxy	DC and 10 Hz to 400 Hz			

Flexible transverse probes



Model	W	T	Active Area	Stem Material	Frequency Range	Corrected accuracy (%) of reading	Temperature coefficient (maximum) zero	Temperature coefficient (maximum) calibration
MFT-3E03-VH	0.135" max	0.025" max	0.040" dia (approx)	Flexible Tubing	DC and 10 Hz to 400 Hz	± 0.25 % to 30 kG	± 0.09 G/°C	- 0.04 %/°C
MFT-3E03-VG						± 0.15 % to 30 kG	± 0.13 G/°C	- 0.005 %/°C

**2-axis probes
3-axis probes**



Model	L	Stem Material	Frequency Range	Usable full scale ranges	Corrected accuracy (%) of reading	Operating temperature range	Temperature coefficient (maximum) zero	Temperature coefficient (maximum) calibration
MMY-1808-UH	8" ± 0.125"	Aluminum	DC and 10 Hz to 400 Hz	30 G, 300 G 3 kG, 30 kG	0.25 % to 20 kG	10°C to 40°C	± 0.09 G / °C	± 0.015 % / °C
MMY-1818-UH	18" ± 0.25"				0.5 % from 20 to 30 kG			

L = length D = diameter A = area



Hystograph AC/DC system Fluxmeter Gaussmeter

Other measuring systems:

- Hystograph
- AC/DC Hystograph
- Fluxmeter

Other products:

- Measuring Technology for Soft Magnetic Materials
- Magnetizing Technology
- Internet Marketplace for Used Instruments
- Services



Dr. Brockhaus Messtechnik GmbH & Co. KG
 Gustav-Adolf-Str. 4 · D-58507 Lüdenscheid
 P.O. Box 13 27 · D-58463 Lüdenscheid
 +49 (0) 700 brockhaus
 +49 (0) 2351 3644-0
 +49 (0) 2351 3644-44 fax
 www.brockhaus.net · mail@brockhaus.net