

TECHNICAL GUIDE

Fiber optic devices



Content index

Application	4
Technical data	5
Dimensions.....	6
Order sheet.....	10

Application

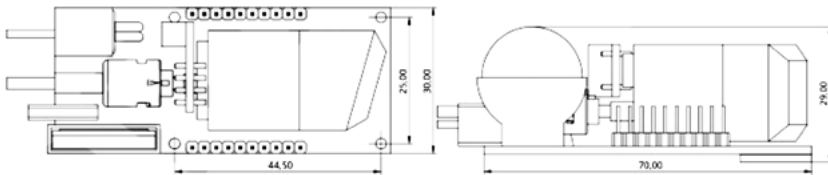
Application										
Device type	For embedded instrument applications	EMI, RFI and microwave environments	High voltage environments	Harsh and hazardous environments	Nuclear environments	Aerospace applications	Process monitoring	Medical applications	Oil-filled transformers	MRI and other magnetic field applications
FOTEMP MN30	●	●	-	-	-	●	●	●	-	●
FOTEMP HD20	-	●	●	●	●	-	●	-	-	●
FOTEMP MS10	-	●	●	-	-	-	●	-	-	●
FOTEMP C15	●	●	●	●	-	●	●	●	●	●
FOTEMP C20	-	●	●	-	-	-	●	●	-	●
FOTEMP T20	-	●	●	●	●	●	●	-	●	●
FOTEMP T30	-	●	●	●	●	-	●	-	●	●

Technical data

Device type	FOTEMP MN30	FOTEMP HD20	FOTEMP MS10	FOTEMP C15	FOTEMP C20	FOTEMP T20	FOTEMP T30
Number of channels	1	1, 2	1, 2, 4 per module	1, 2, 4	1, 2, 4	2 to 16	2 to 16
Modules	-	-	10x7TE or 5x14TE	-	-	-	4x up to 4 channel
Measuring range	-200°C to 300 °C	-200°C to 300 °C	-200°C to 300 °C	-200°C to 300 °C	-200°C to 300°C	-200°C to 300 °C	-200°C to 300 °C
Accuracy	± 0.2 K	± 0.2 K	± 0.2 K	± 0.2 K	± 0.2 K	± 1 K	± 1 K
Sample rate channel	250 ms	250 ms	250 ms	250 ms	250 ms	250 ms	250 ms
Display	-	3.5" LCD	0.96" on 7TE or 14TE OLED	-	2,8" LCD	4.3" LCD	7" LCD
Analog output	-	-	0-10 V or 4-20 mA	0-10 V or 4-20 mA	0 - 10 V or 4 - 20 mA	0 - 10 V or 4 - 20 mA	0 - 10 V or 4 - 20 mA
Relay	-	-	1 per channel	1 per channel	1 per channel	2 programmable, 1 sensor fault, 1 watchdog	16 free programmable relays
Interface	TTL, RS232, RS485, USB	USB, Reference sensor	RS232, USB	USB, RS232 (standard) or RS485(option)	USB and RS232 (standard) or RS485(option)	RS232, RS485, USB, Ethernet	RS232 (DEBUG), RS485, Ethernet
Additional protocols	Modbus	-	-	Modbus	Modbus	Modbus	Modbus, DNP3.0, IEC61850, IEC 60870-104
Data logging	Continuous or timed logging on microSD	Continuous or timed temperature logging, spectrum snapshots	-	-	-	Continuous or timed logging on microSD	-
Internal data logging	Yes	Yes	-	-	-	Yes	Yes
Power supply	USB-Powered (Standard) 9-24 VDC	9 VDC	100 - 240 VAC / 50 - 60 Hz	12 VDC	12 VDC	24 VDC	24 VDC
Mounting / Housing options	Mounting holes	-	19" rack mount chassis, 84TE or 42TE cabinet	DIN rail mounting bracket, Pressed nuts, Threaded bolts	DIN rail mounting bracket, Pressed nuts, Threaded bolts	DIN rail mounting bracket	DIN rail or standard mounting brackets
Connector type	ST	ST	ST	ST	ST	ST	ST

Dimensions

FOTEMP MN30



Width (mm)	Height (mm)	Depth (mm)	Weight (Kg)
70	30	29	0.2

FOTEMP HD20



Width (mm)	Height (mm)	Depth (mm)	Weight (Kg)
20	112	40	0.6

FOTEMP MS10

Housing variants



Name	19" Cabinet mounting housing	84TE or 42TE Desktop housing
-------------	------------------------------	------------------------------

Module variants



Name	MS-14TE	MS7TE	MS7TE-S
Size	14TE	7TE	7TE
Channel	1 - 4	1 - 4	1
Display	1,7" OLED	-	0,96" OLED
Analog	0 - 10 V or 4 - 20 mA per Channel	0 - 10 V or 4 - 20 mA per Channel	0 - 10 V or 4 - 20 mA
Relay	1x Relay per Channel	1x Relay per Channel	-

Version	Width (mm)	Height (mm)	Depth (mm)	Weight (Kg)
Cabinet mounting housing	488	133	247	0.8
B4TE Desktop housing	538	158	305	
42TE Desktop housing	323	158	305	

Dimensions

FOTEMP C15



Width (mm)	Height (mm)	Depth (mm)	Weight (Kg)
42	160	105	0.5

FOTEMP C20



Width (mm)	Height (mm)	Depth (mm)	Weight (Kg)
160	105	75	0.5

FOTEMP T20



Width (mm)	Height (mm)	Depth (mm)	Weight (Kg)
209	203	109	2.0

FOTEMP T30



Width (mm)	Height (mm)	Depth (mm)	Weight (Kg)
238	190	155	2.0

Order sheet

Date	
Rev.	
Customer reference	

Device type

FOTEMP MN30	
FOTEMP HD20	
FOTEMP MS10	
FOTEMP C15	
FOTEMP C20	
FOTEMP T20	
FOTEMP T30	

Channels (see page 5)

1	
2	
4	
8	
12	
16	
1 - 40 (please specify)	

Analog output (see page 5)

0 - 10V (Standard)	
4 - 20 mA (Option)	

Accuracy calibration (1 sigma)

0.2 K (Standard)	
1 K (Option)	

Communication

USB + RS232 (Standard)	
USB + RS485/Modbus (Option)	

Temperature calibration

-20°C to +150°C (Basic)	
-40°C to +200°C (Standard)	
-40°C to +300°C (High temperature)	
-200°C to +300°C (Extended)	
Customer special (please specify)	

COMEM SpA

Localita' Signolo 22, Sr11
36054 Montebello Vicentino
Vicenza - Italy
Tel +39 0444 449 311

COMEM Optocon GmbH

Washingtonstraße 16/16a
D-01139 Dresden
Germany
Tel +49 (0)351 8435990

www.comem.com

The data and illustrations are not binding. We reserve the right to modify the contents of this document without prior notice following the technical and product developments.

Copyright 2024 COMEM. All rights reserved

Technical guide-08-2024